



# Optimizing Printer Calibration with AI for High-Quality CD / DVD Artwork

## Challenge

A leading international media production company specializing in CD and DVD manufacturing sought to improve the precision and efficiency of its printer calibration process.

Adjusting machine calibrations for optimal print quality is a complex, time-intensive task. Traditional methods often relied on manual adjustments that were prone to human error, resulting in inconsistent print quality. Technicians also faced difficulties aligning printed output with optimal image references without advanced tools, which created heavy workloads for specialized staff.

The company needed a more efficient, streamlined approach to enhance printer calibration and ensure consistent, high-quality artwork production.

## Solution

INSPIR Solutions designed and implemented an AI-powered calibration system that streamlined the adjustment process and minimized waste.

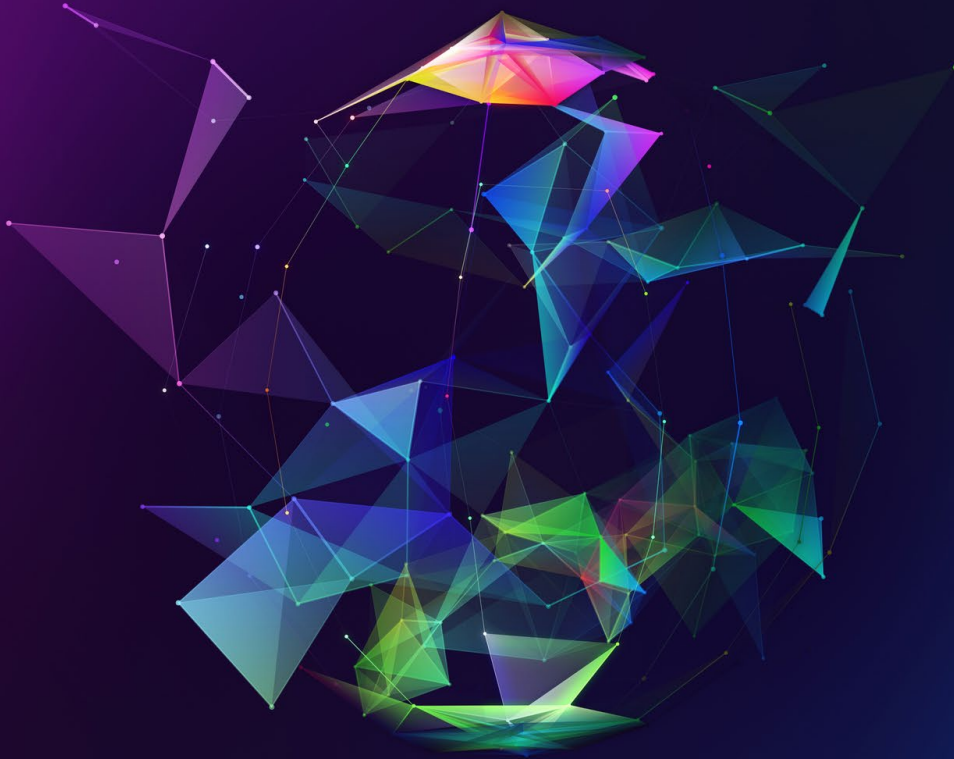
The solution centered on a **Calibration Analysis and Adjustment Model**, built with AI frameworks in Python such as scikit-learn. The model was trained with extensive calibration data and comparisons of optimal versus production print results.

Key features of the solution included:

- **Ink-RGB and RGB-Ink Approximation Models:** Custom algorithms to align test prints with optimal cases and determine precise calibration adjustments.



**The AI-driven calibration system reduced material waste by 15% per month.**



- **Machine Learning Calibration:** Automated analysis of print test data to identify deviations and recommend corrections in real time.

With these capabilities, the system enabled technicians to achieve consistent, high-quality calibration while reducing manual effort.

## Outcome

The AI-driven calibration system delivered measurable results:

- **Efficiency:** Improved the technical team's calibration process speed.
- **Waste Reduction:** Reduced material waste by 15% per month.
- **Quality:** Ensured consistent, high-quality CD and DVD artwork production.

## Client Profile

The client is a global media production company with more than 2,000 employees, specializing in the large-scale manufacturing of CDs and DVDs.

## Technologies Supported

Artificial intelligence, calibration data modeling, machine learning, Python frameworks (scikit-learn)

## About INSPYR Solutions

Technology is our focus and quality is our commitment. As a leading expert in delivering flexible technology and talent solutions, we strategically align industry and technical expertise with our clients' business objectives and cultural needs. Our tailored offerings

include a wide variety of professional services, project solutions, managed services, and talent resources, all bolstered by our strategic partnerships with cutting-edge technology services. By always striving for excellence and focusing on the human aspect of our business, we work seamlessly with our talent and clients to match the right solutions to the right opportunities. Learn more about us at [www.inspyrsolutions.com](http://www.inspyrsolutions.com).